



# Widening of US 84 From Hwy 772 to Just East of Hair Creek Bridge Environmental Assessment State Project No. H.000758.2

## Open House Public Hearing

March 26, 2014  
4:00PM to 7:00PM



### US 84 | TEAM MEMBERS

HOSTED BY:



Department of  
Transportation and  
Development



Federal Highway  
Administration

PRESENTED BY:



CH Fenstermaker  
& Associates, LLC

IN ASSOCIATION WITH:



Earth Search, Inc.



Urban Systems  
Associates, Inc.

## US 84 | TONIGHT'S FORMAT

---

- This is an Open House format – please visit each station.
- Watch this presentation video.
- Talk with project team members and view project alternatives.
- Provide your written or verbal comments on the project.

Widening US 84 – EA | H.000758.2

Public Hearing

## US 84 | WHAT IS THE PURPOSE OF THIS PUBLIC HEARING?

---

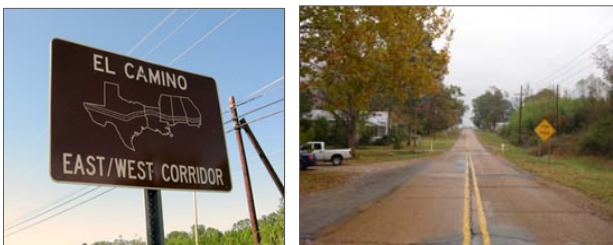
- Seek input on issues and concerns related to potential impacts;
- Allow the public time to review the project study area and project exhibits;
- Offer the public an opportunity to speak informally with representatives from the Project team and provide comments; and
- Seek input on the preferred alternative and its potential impacts.

Widening US 84 – EA | H.000758.2

Public Hearing

**US 84 | THE PROJECT**

- Widen existing US 84 through Jena, LA
- Portion of El Camino Corridor
- Environmental Assessment (Stage 1)
- Conduct environmental review of alternatives

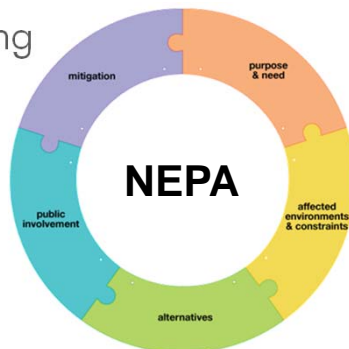


Widening US 84 – EA | H.000758.2

Public Hearing

**US 84 | NATIONAL ENVIRONMENTAL POLICY ACT**

- Federal policy of 1969
- Requires analysis of environmental impacts
- Analyzes build and no build alternatives
- Requires early and on-going public involvement



Widening US 84 – EA | H.000758.2

Public Hearing

## US 84 | NEPA ENVIRONMENTAL REVIEW PROCESS

---

- Purpose and Need
- Alternative Development
- Traffic Analysis
- Environmental Impacts
- Alternative Screening
- NEPA Documentation

Widening US 84 – EA | H.000758.2

Public Hearing

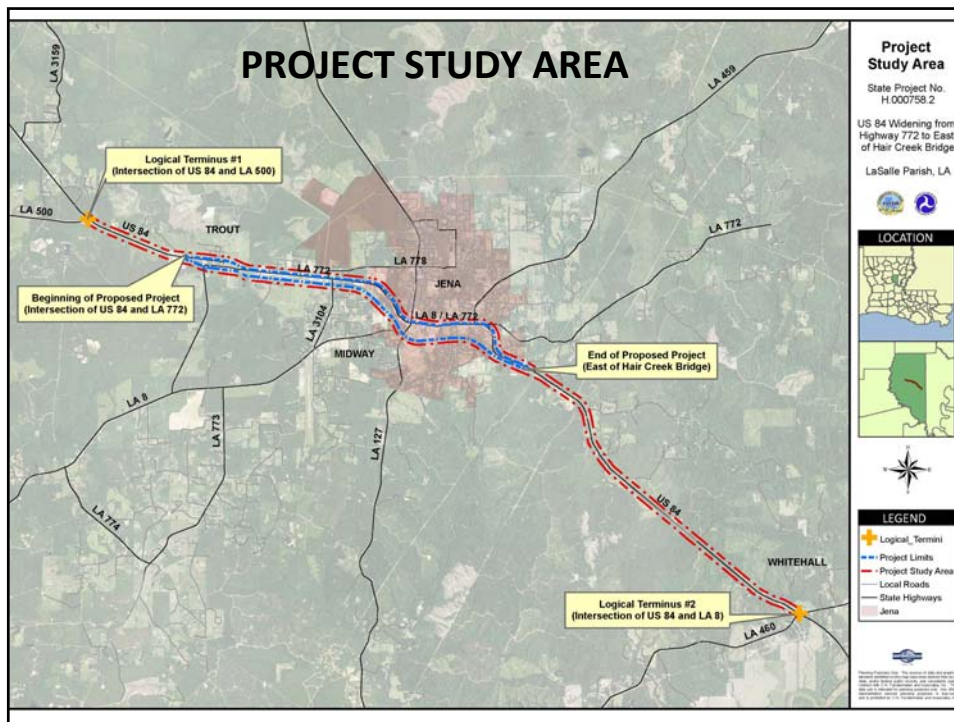
## US 84 | ENVIRONMENTAL ASSESSMENT PROCESS

---

- Define the Study Area
- Coordinate with other federal and state agencies
- Collect data and technical studies
- Development of Project Alternatives
- Host informational Public Meeting – held on July 12, 2012
- Refine Alternatives
- Prepare a Draft EA
- Open House Public Hearing (Tonight)
- Review comments on the Draft EA
- Prepare Final EA (incorporating comments)
- Finding of No Significant Impact (FONSI)

Widening US 84 – EA | H.000758.2

Public Hearing



## US 84 | PROJECT PURPOSE & NEED

### PURPOSE

The *purpose* of this project is to improve mobility throughout the corridor in order to relieve existing traffic congestion and promote local traffic circulation.

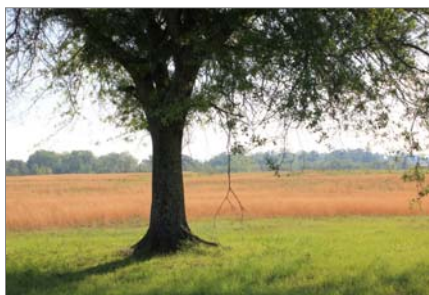
### NEED

The *needs* addressed by the proposed action include:

- System Linkage
- Improved Safety
- Social Demand or Economic Development

## US 84 | WHAT RESOURCES DOES THE EA ANALYZE?

- Land Use
- Recreational Sources
- Social & Economic Resources
- Floodplains
- Air Quality
- Noise
- Water Resources
- Wildlife
- Floodplains



Widening US 84 – EA | H.000758.2

Public Hearing

## US 84 | ALTERNATIVE SCREENING CONSIDERATIONS

- Residential/Commercial Relocations
- Acreage of Wetland Impacts
- Impacts to Cultural & Historically Significant Structures



Widening US 84 – EA | H.000758.2

Public Hearing

**US 84 | ALTERNATIVE SCREENING CONSIDERATIONS**

- Estimated Construction Costs
- Traffic Performance
- Impacts to Community Facilities



Widening US 84 – EA | H.000758.2

Public Hearing

**US 84 | PROJECT DETAILS**

- Project Limits
  - Hwy 772 (Trout Community)
  - East of Hair Creek Bridge
- Approximately 5 miles
- Widen 2 lanes to 4 lanes-divided
- Raised/Depressed Median Section



Widening US 84 – EA | H.000758.2

Public Hearing

## US 84 | DESIGN APPROACHES

- Stage 0 Recommendations
- Jena's Vision – Town of Jena Comprehensive Plan Recommendations
- Context Sensitive Design
- Complete Streets Application



Widening US 84 – EA | H.000758.2

Public Hearing

## US 84 | ALTERNATIVES 1, 2A, 2B, and 4

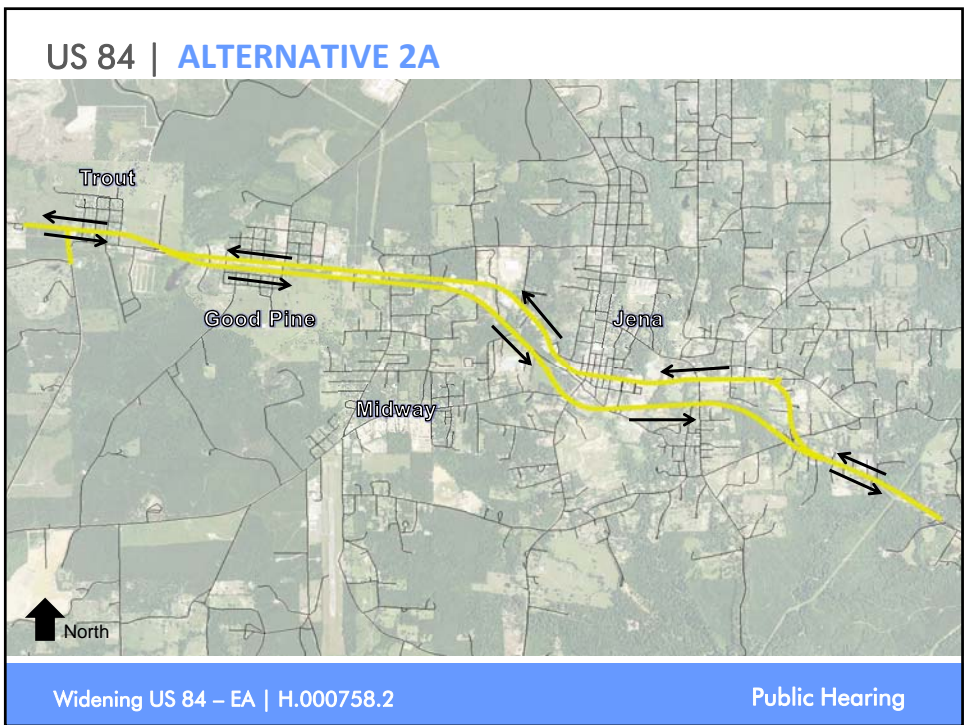
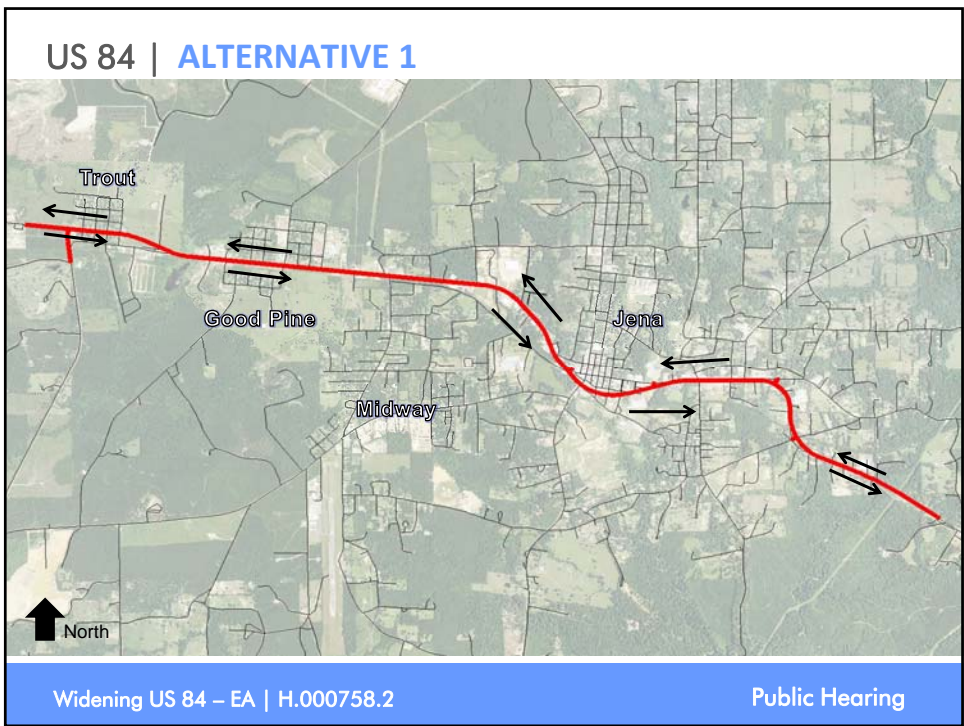
The following slides illustrate the four alternatives: 1, 2A, 2B and 4.

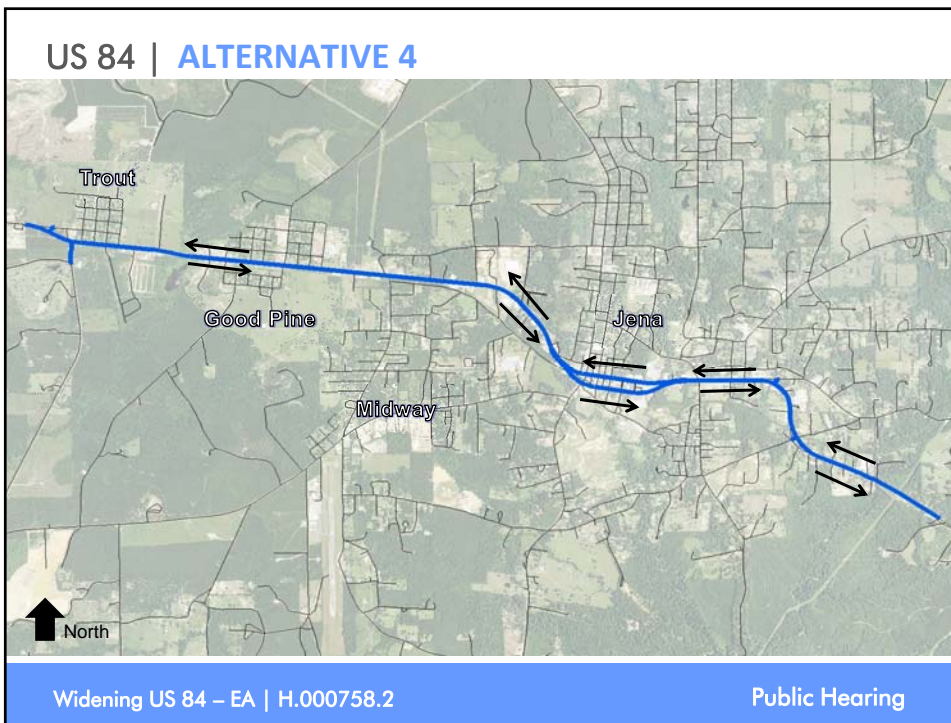
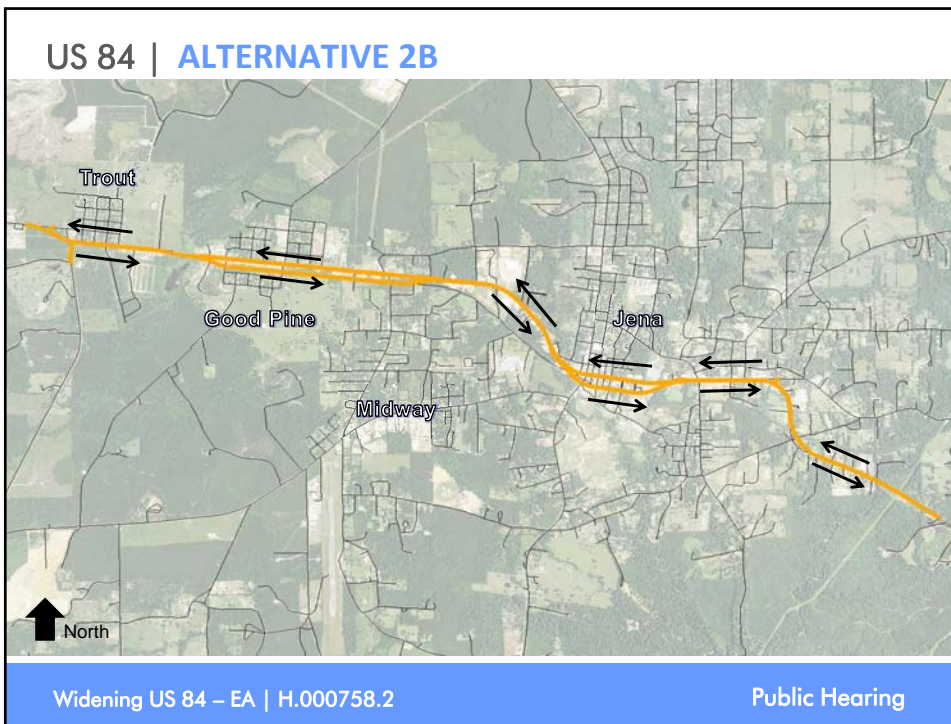


Widening US 84 – EA | H.000758.2

Public Hearing







**US 84 | ALTERNATIVES SUMMARY**

---

Following the Public Meeting on July 12, 2012, Alternatives 2B and 4 were identified as the preferred alternatives on which to conduct detailed field analyses. This was based on the impact data obtained during desktop evaluations for each alternative coupled with feedback received during the Public Meeting on alternative preferences.

Widening US 84 – EA | H.000758.2

Public Hearing

**US 84 | ALTERNATIVES SUMMARY**

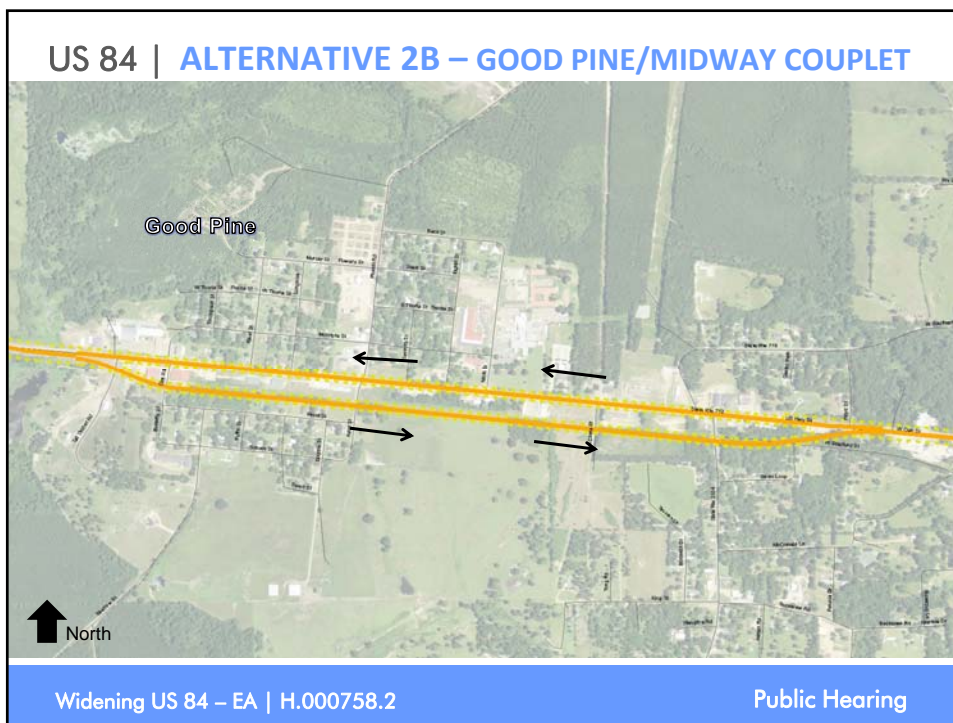
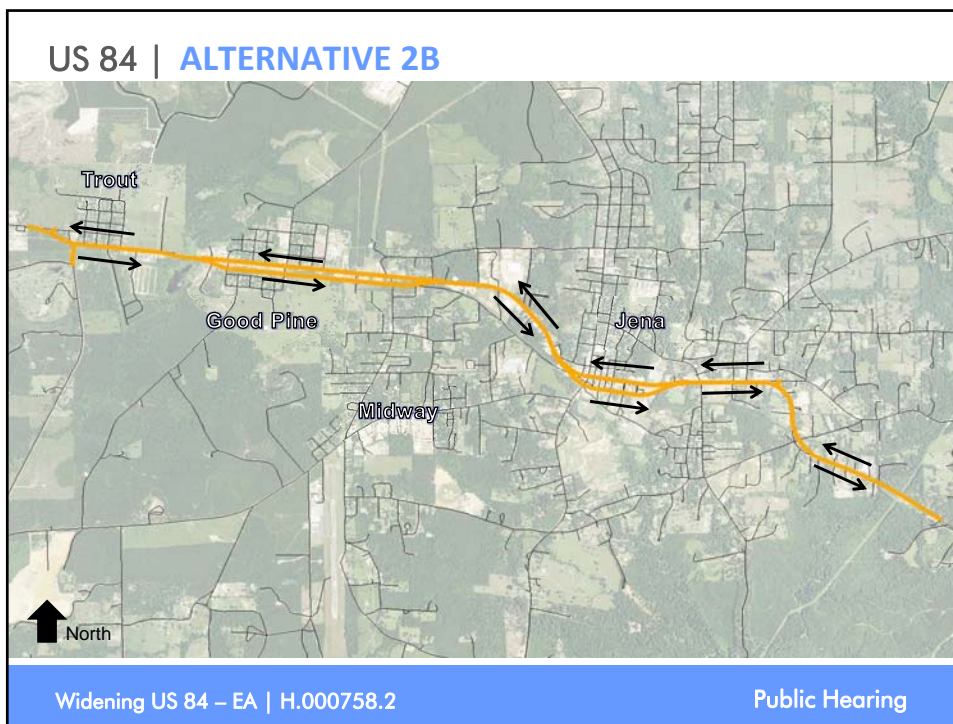
---

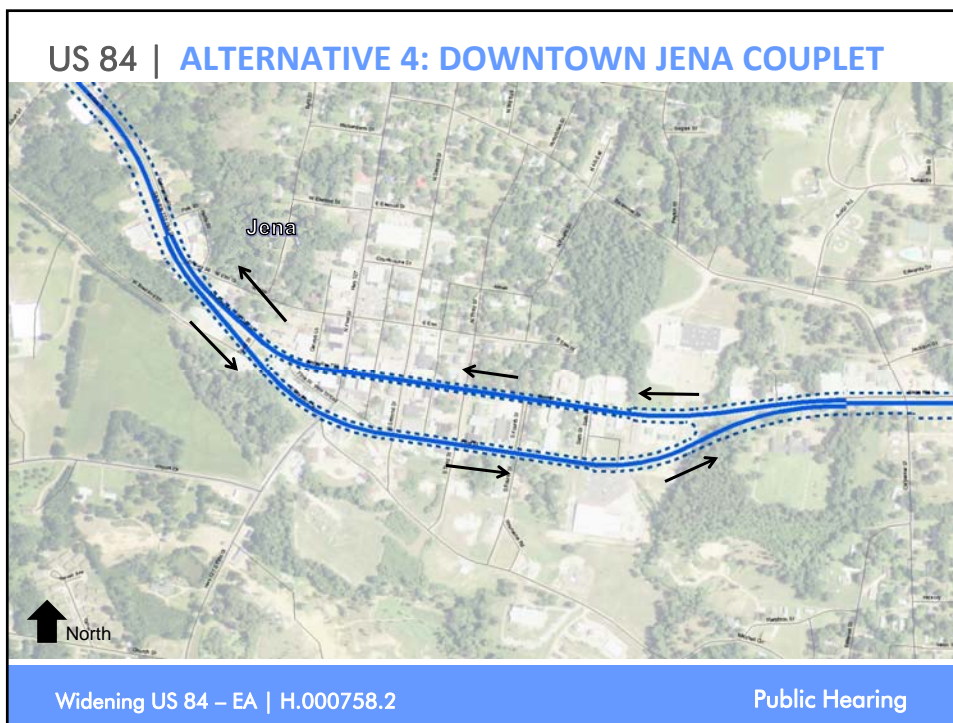
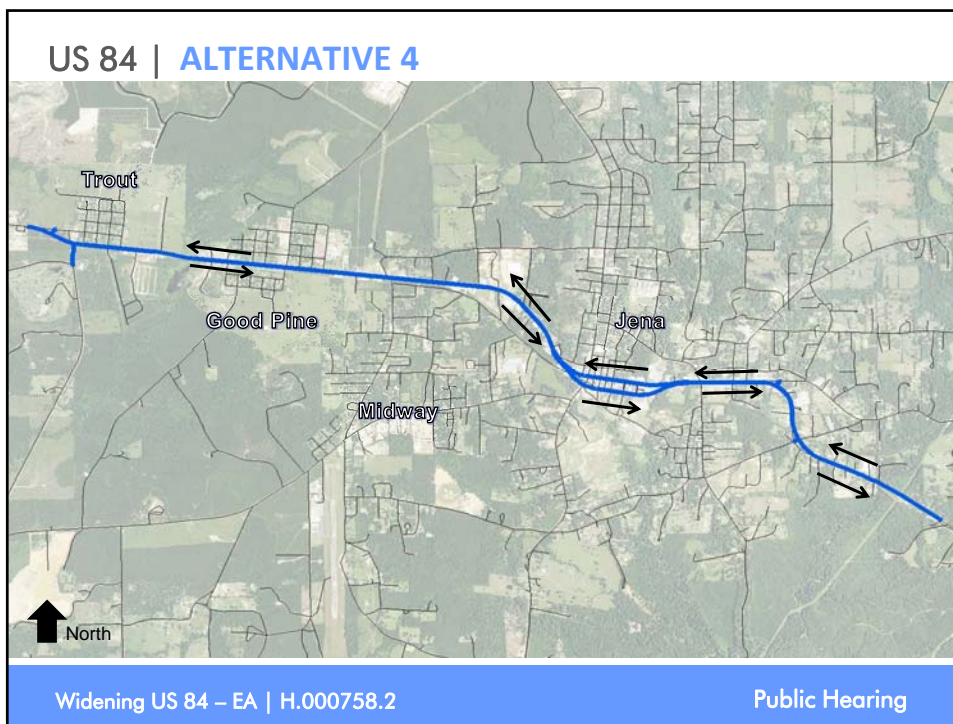
Alternatives 2B and 4 are identical from the Town of Jena (approximately near Wal-Mart) to the eastern end of the project. The difference between the two alternatives is the two-way couplet in Alternative 2B through the Good Pine/Midway area.

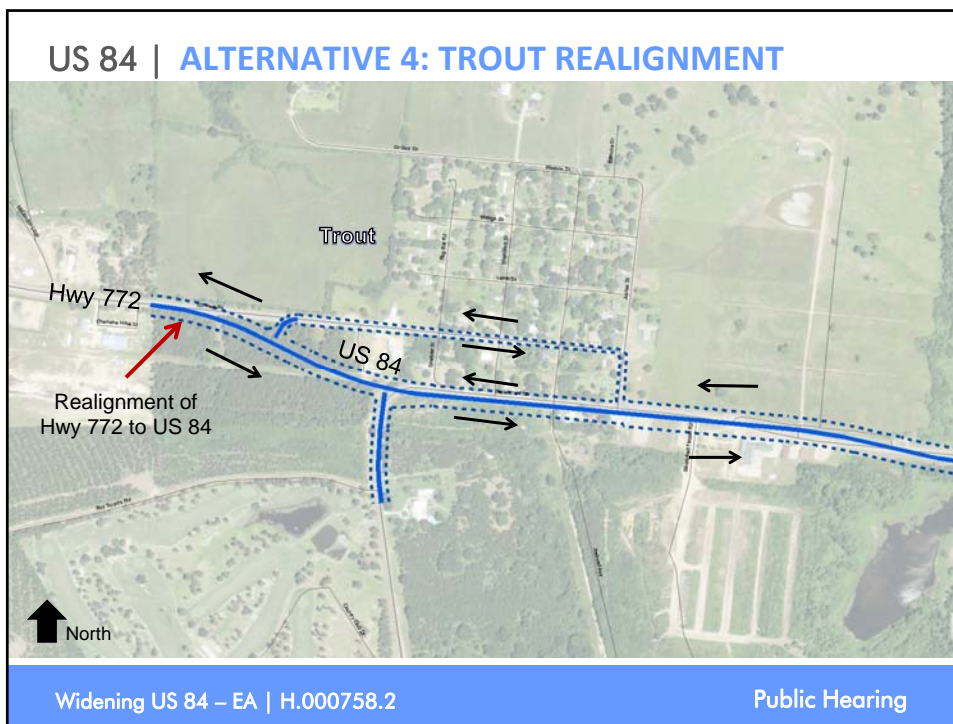
Widening US 84 – EA | H.000758.2

Public Hearing









### US 84 | ALTERNATIVES IMPACTS

Evaluation Measure	Units	No Build	1	2A	2B	4
<b>Potential Relocation Impacts</b>						
Residential Relocations	Each	0	34	25	24	24
Business Relocations	Each	0	63	18	43	57
Community Relocations	Each	0	0	1 <sup>a</sup>	1 <sup>a</sup>	0
Other Relocations	Each	0	1 <sup>b,c</sup>	1 <sup>c</sup>	1 <sup>c</sup>	1 <sup>c</sup>
<b>Potential Traffic Impacts During Construction</b>		NA	Low	Low	Med	Low
<b>Potential Frontage Impacts</b>						
Residential Properties	Each	0	7	9	4	4
Business Properties	Each	0	27	107	52	24
Community Properties	Each	0	4	1	2	1
Vacant/Unused Structures	Each	0	70	68	78	67
<b>Potential Underground Risk Sites</b>						
Recognized Environmental Concerns (RECs)	Each	0	39	39	40	40
Oil and Gas Wells	Each	0	0	0	0	0
<b>Natural Environment</b>						
Wetlands Filled	Acres	0	0.61 <sup>d</sup>	1.02 <sup>d</sup>	0.891 <sup>e</sup>	0.882 <sup>e</sup>
Scenic Streams	Each	0	0	0	0	0
Stream Crossings	Each	0	4	4	4	4

Widening US 84 – EA | H.000758.2 Public Hearing

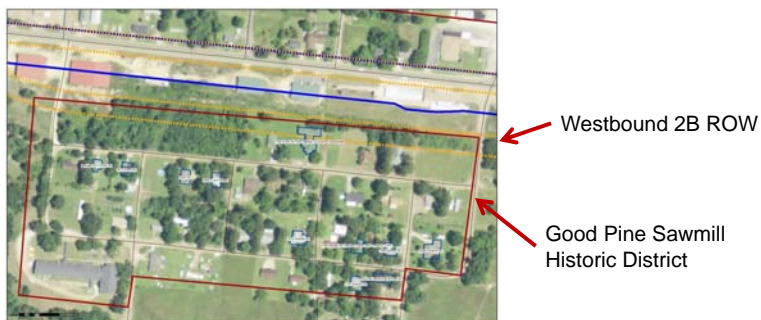


US 84   ALTERNATIVES IMPACTS						
Evaluation Measure	Units	No Build	1	2A	2B	4
<b>Natural Environment cont...</b>						
Other Waters Filled (RPW)	Acres	0	--	--	0.511 <sup>e</sup>	0.562 <sup>e</sup>
Other Waters Filled (Non-RPW)	Acres	0	--	--	0.427 <sup>e</sup>	0.598 <sup>e</sup>
Ponds Filled	Each	0	0	0	0	0
Sole Source Aquifer Impacts	Acres	0	0	0	0	0
Floodplain Encroachment	Acres	0	8.4	9.3	7.4	7.6
Protected Species	Each	0	0	0	0	0
Prime and Unique Farmland	Acres	0				
Coastal Res./Essential Fish Habitat	Each	NA	NA	NA	NA	NA
<b>Utilities</b>						
LDOTD-listed Water Wells	Each	0	9 <sup>f</sup>	12 <sup>f</sup>	8 <sup>f</sup>	8 <sup>f</sup>
<b>Cultural Resources</b>						
Historic Properties recommended as eligible for NR Historic District	Each	0	9	12	2	0
Historic Properties recommended as NOT eligible NR Historic District	Each	0	26	21	15	12
Historic Properties recommended as eligible or listed on NR as individual	Each	0	0	2	2	0
Archaeological Sites Eligible for or Listed on NRHP	Each	0	0	0	0	0
Widening US 84 – EA   H.000758.2		Public Hearing				

US 84   ALTERNATIVES IMPACTS						
Evaluation Measure	Units	No Build	1	2A	2B	4
<b>Cultural Resources cont...</b>						
Archaeological Sites Not Eligible for NRHP	Each	0	3	5	3	6
<b>Noise</b>						
Residential Receivers Design Year Noise Level > 66 dBA	Each	0	3	2	3	4
Residential Receivers Design Year Increase > 10 dBA	Each	0	2	6	6	0
Total # Impacted Receivers	Each	0	4 <sup>g</sup>	8	9	4
ROW Acquisition	Acres	N/A	63	67	47	55
ROW Costs <sup>h</sup>	\$Million	N/A	\$9.489	\$5.125	\$6.598	\$8.995
<b>Comparison of Probable Costs by Alternative</b>						
Construction Costs <sup>i</sup>	\$Million	N/A	\$53.157	\$51.004	\$50.051	\$54.728
Engineering (10%)	\$Million	N/A	\$5.316	\$5.100	\$5.005	\$5.473
ROW and Relocation Costs <sup>j</sup>	\$Million	N/A	\$17.139	\$11.121	\$12.368	\$15.556
<b>Project Totals</b>	\$Million	N/A	<b>\$75.611</b>	<b>\$67.225</b>	<b>\$67.424</b>	<b>\$75.757</b>
Widening US 84 – EA   H.000758.2		Public Hearing				

## US 84 | ALTERNATIVES SUMMARY

A majority of the impacts between Alternatives 2B and 4 are similar. The most defining difference is the potential impact of Alternative 2B to the proposed Good Pine Sawmill Historic District and the Jena Cultural Center. Both alternatives meet the desired community request of keeping US 84 through downtown Jena.



Widening US 84 – EA | H.000758.2

Public Hearing

## US 84 | ALTERNATIVES SUMMARY

Both alternatives have relocation and frontage impacts; however, Alternative 4 has more business relocations and Alternative 2B has more business frontage impacts. Both alternatives could improve the streetscape and development opportunity, but the Good Pine couplet in Alternative 2B could limit development of the properties within the couplet and impact the local circulation for area residents.

Widening US 84 – EA | H.000758.2

Public Hearing



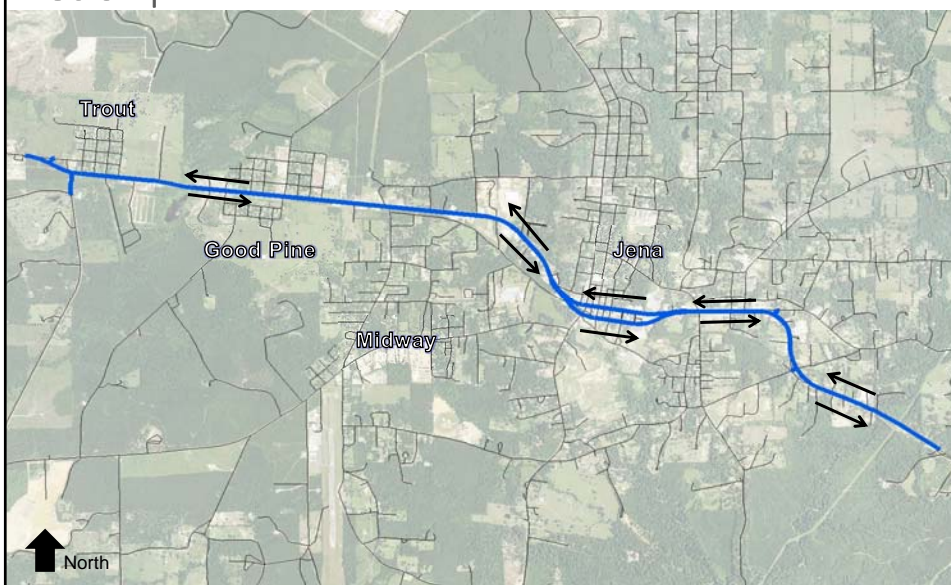
## US 84 | **PREFERRED ALTERNATIVE**

Alternative 4 meets the established purpose and need of the project and addresses the concerns identified by the public...

Widening US 84 – EA | H.000758.2

Public Hearing

## US 84 | **PREFERRED ALTERNATIVE – ALTERNATIVE 4**



Widening US 84 – EA | H.000758.2

Public Hearing

**US 84 | WHAT IS CONTEXT SENSITIVE DESIGN?**

---

Every project has a unique *context* comprised of the cultural, environmental, socioeconomic, and physical features of the corridor and surrounding area.

**US 84 | CONTEXT SENSITIVE DESIGN EXAMPLE**

---



BEFORE

## US 84 | CONTEXT SENSITIVE DESIGN EXAMPLE



AFTER

Widening US 84 – EA | H.000758.2

Public Hearing

## US 84 | ROW/RELOCATION ASSISTANCE

- If you are concerned about ROW/Relocation assistance, please watch the slide presentation immediately following this for more information.
- A DOTD representative is available tonight to answer any questions.

Widening US 84 – EA | H.000758.2

Public Hearing

## US 84 | **NEXT STEPS/SCHEDULE**

---

- Address Comments to Draft EA – April 2014
- Identify Selected Alternative – May 2014
- Prepare Final EA – May 2014
- Secure Environmental Closure – June 2014

DOTD views this project as a priority and is working to secure funding for construction.

Widening US 84 – EA | H.000758.2

Public Hearing

## US 84 | **WE WANT TO HEAR FROM YOU!**

---

- Please view the exhibits for a closer look at alternatives and typical sections;
- Talk to a team member; and
- Provide your comments tonight or send them in by April 13, 2014, to be included in the project record.

This presentation will be made available online.

Widening US 84 – EA | H.000758.2

Public Hearing

## US 84 | WE WANT TO HEAR FROM YOU!

---

- Verbal comments can be recorded at Station #5 with the court reporter;
- Written comments can be handed in tonight; or
- Written comments can be emailed or mailed (postmarked by April 13, 2014) – see the comment form for contact information.

Widening US 84 – EA | H.000758.2

Public Hearing

## US 84 | PUBLIC MEETING SET-UP

---

Please walk around and view the exhibits, ask questions to any of the project team members, and provide your comments.



Widening US 84 – EA | H.000758.2

Public Hearing

## US 84 | STATIONS

---

- STATION #1 – Sign In/Verify Your Information
- STATION #2 – Project Presentation
- STATION #3 – Proposed Alternatives Exhibits
- STATION #4 – Right-of-Way Acquisition
- STATION #5 – Provide Your Comments

Widening US 84 – EA | H.000758.2

Public Hearing



# THANK YOU!

